

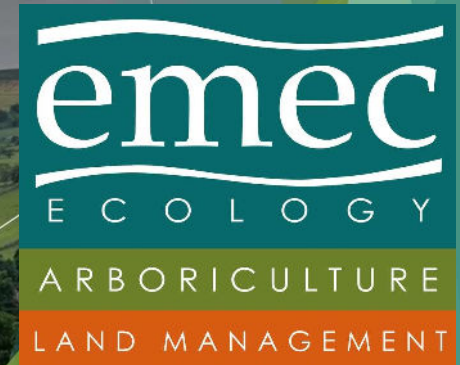


Wildlife Trust
Consultancies

EMEC Ecology

Greener Golf

19th May 2023





Ensuring Positive Conservation Outcomes

- ▶ **Established Relationships**
 - ▶ Incorporated in 1991
 - ▶ Subsidiary of Nottinghamshire Wildlife Trust (NWT)
- ▶ **Social Enterprise**
 - ▶ All profits are donated to NWT annually
 - ▶ EMEC aligned closely with NWT's objectives
- ▶ **National Impact**
 - ▶ Part of a network of Wildlife Trust Consultancies based nationally

£1m

Gift Aided to



Nottinghamshire
Wildlife Trust

emec
ECOLOGY
ARBORICULTURE
LAND MANAGEMENT

Wildlife Trust Consultancies



▶ National Delivery with Local Expertise

- 1 Arcadian Ecology & Consulting
- 2 Chalkhill Environmental Consultants
- 3 Cheshire Ecological Services
- 4 Cornwall Environmental Consultants
- 5 Cumbria Wildlife Trust
- 6 Ecoservices
- 7 Devon Wildlife Consultants
- 8 East Midlands Environmental Consultants
- 9 EcoNorth
- 10 EcoÉireann
- 11 Enfys Ecology
- 12 Essex Ecology Services
- 13 First Ecology
- 14 Future Nature
- 15 Kent Wildlife Trust Consultants
- 16 London Wildlife Trust
- 17 Middlemarch Environmental
- 18 MWT Consultancy
- 19 Norfolk Wildlife Services
- 20 SWT Ecology Services
- 21 Wilder Ecology (SWT Trading Ltd)
- 22 Wild Service
- 23 Wildscapes
- 24 Worcestershire Wildlife Consultancy

▶ EMEC Lead

- ▶ National Projects
- ▶ Reliable Delivery

▶ Wildlife Trust Links

- ▶ All aligned with their local Wildlife Trust
- ▶ Additional Expertise

▶ National Impact

- ▶ Natural England
- ▶ Network Rail

24
Independent
Wildlife Trust
Consultancies



Delivering integrity in...



► Ecology

- Preliminary Appraisals, Impact Assessments
- Protected and Non-Native Species Surveys

► Arboriculture

- Surveys, Method Statements and Hazard Assessments
- Tree Works to British Standards

► Land Management

- Ecological Mitigation, Habitat Creation and Management

► Project Management

- Large multi-stakeholder projects
- From development to completion

300
Clients
700
Projects

emec
ECOLOGY
ARBORICULTURE
LAND MANAGEMENT

Biodiversity Net Gain



emec
E C O L O G Y
A R B O R I C U L T U R E
L A N D M A N A G E M E N T



What is Biodiversity Net Gain?

▶ Biodiversity:

- ▶ The variety of plant and animal life in the world or in a particular habitat, a high level of which is usually considered to be important and desirable

▶ Net Gain:

- ▶ Overall gain, rather than loss or maintenance

▶ Biodiversity Net Gain (BNG) is:

- ▶ An approach to development that aims to leave the natural environment in a measurably better state than it was beforehand.



Legislation - The Environment Act 2021

- ▶ The legal requirements for BNG are expected to come into force in November 2023.
- ▶ Schedule 7A - *‘This Schedule makes provision for grants of planning permission in England to be subject to a condition to secure that the biodiversity gain objective is met.’*
- ▶ *‘The biodiversity gain objective is met in relation to development for which planning permission is granted if the biodiversity value attributable to the development exceeds the pre-development biodiversity value of the onsite habitat by at least the relevant percentage.’*
- ▶ The relevant percentage is **10%**.

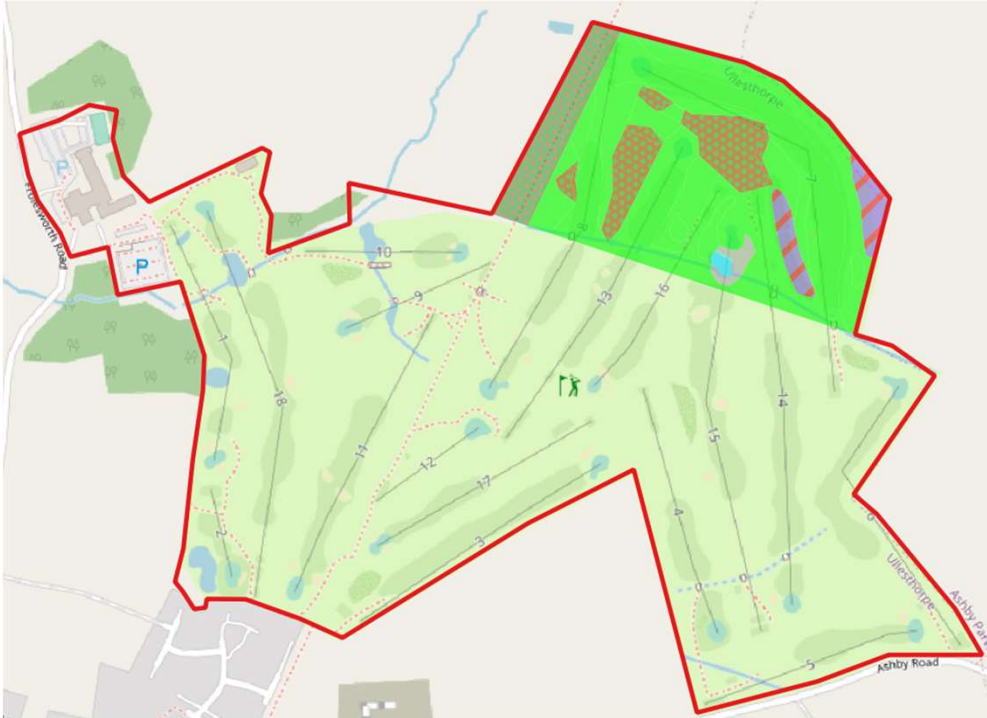
Requirements of BNG

- ▶ Minimum 10% gain required calculated using Biodiversity Metric & approval of net gain plan by the LPA
- ▶ Habitat secured for at least 30 years via obligations/ conservation covenant
- ▶ Habitat can be delivered on-site, off-site or via statutory biodiversity credits
- ▶ There will be a national register for net gain delivery sites
- ▶ The mitigation hierarchy still applies - Avoidance > Mitigation > Compensation for biodiversity loss
- ▶ Will also apply to Nationally Significant Infrastructure Projects (NSIPs)

Does not change existing legal environmental and wildlife protections



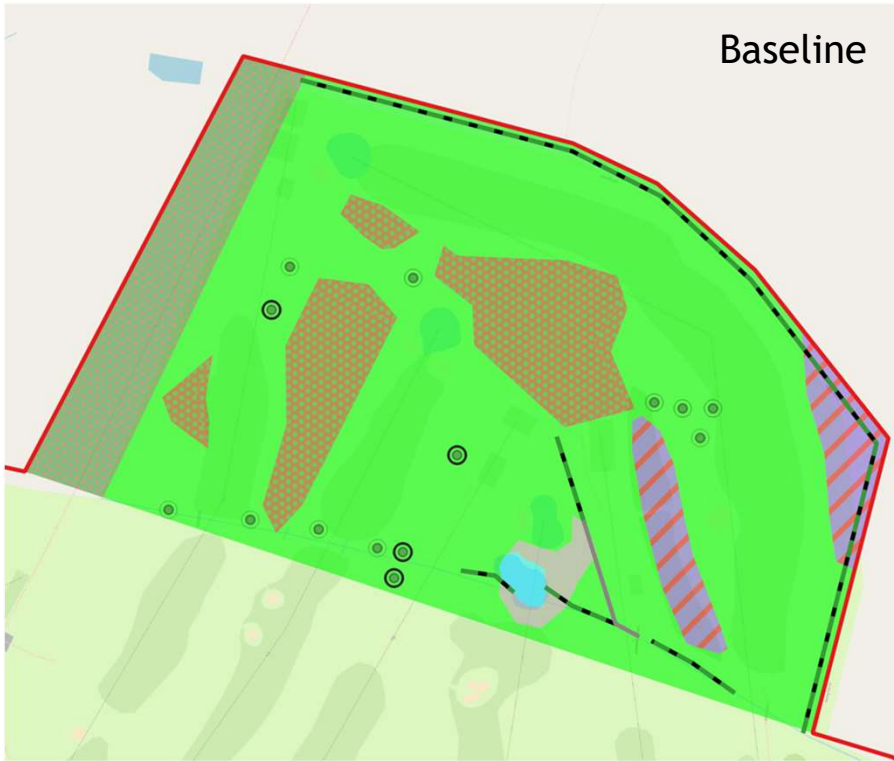
BNG at Golf Clubs



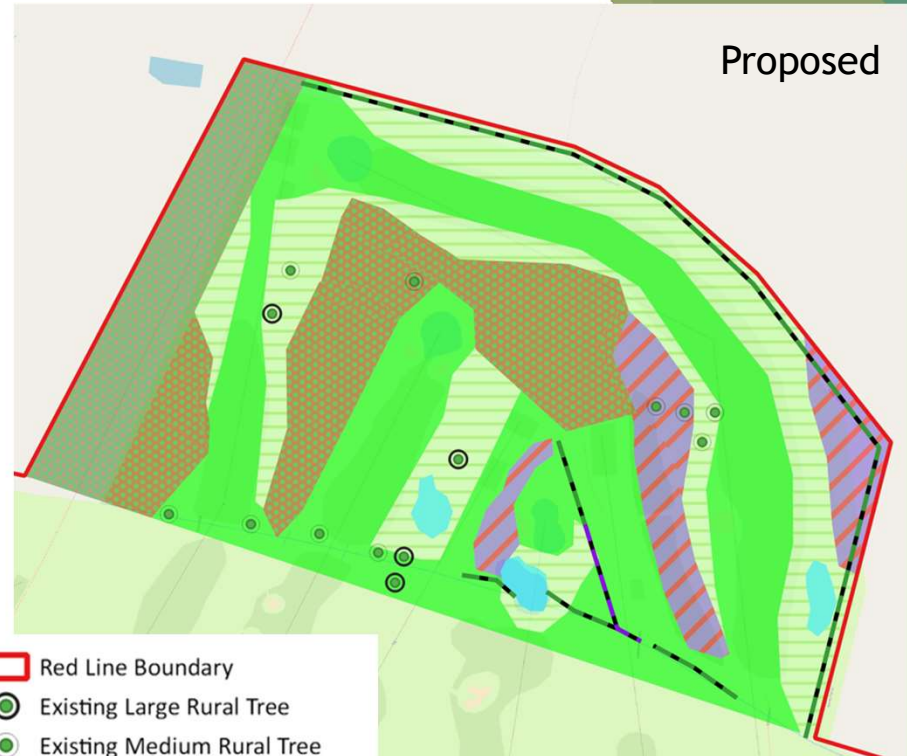
1. Increases Biodiversity
2. Increased value for members
3. Environmental Asset - Protects land usage for 30 years.
4. Potential Revenue Stream - £12-15k per unit.

BNG at Ullesthorpe

Baseline



Proposed



- Red Line Boundary
- Existing Large Rural Tree
- Existing Medium Rural Tree
- Existing Small Rural Tree
- Line of trees
- Species-rich native hedgerow
- Mixed scrub
- Modified grassland
- Other neutral grassland
- Other woodland; broadleaved
- Other woodland; mixed
- Ponds (non-priority habitat)

DEFRA Metric 4.0

| Broad Habitat | Habitat Type | Area (hectares) | Distinctiveness | Score |
|---------------|--------------------|-----------------|-----------------|-------|
| Grassland | Modified grassland | 4.4683 | Low | 2 |

| Condition | Score | Strategic significance | Strategic significance | Strategic position multiplier | to Meet Trading Rules | Total hedgerow units |
|-----------|-------|--|----------------------------|-------------------------------|-------------------------------------|----------------------|
| Moderate | 2 | Area/compensation not in local strategy/ no local strategy | Low Strategic Significance | 1 | Same distinctiveness band or better | 2.49 |

| | | | |
|--|--------------------------|-------|--------|
| On-site baseline | <i>Habitat units</i> | 34.30 | |
| | <i>Hedgerow units</i> | 2.63 | |
| | <i>Watercourse units</i> | 0.00 | |
| On-site post-intervention (Including habitat retention, creation & enhancement) | <i>Habitat units</i> | 56.37 | |
| | <i>Hedgerow units</i> | 4.22 | |
| | <i>Watercourse units</i> | 0.00 | |
| On-site net change (units & percentage) | <i>Habitat units</i> | 22.07 | 64.36% |
| | <i>Hedgerow units</i> | 1.59 | 60.44% |
| | <i>Watercourse units</i> | 0.00 | 0.00% |

Habitat Intervention - Ponds

Construction

- ▶ Clay or Bentonite Lining
- ▶ Marginal and Aquatic Planting
- ▶ 2 days construction, 1 day planting

Maintenance

- ▶ Removal of invasive species
- ▶ Maintain 20-30% open water



Unit Change

- ▶ 450m² of Modified Grassland with Low Distinctiveness in Poor condition = 0.09
- ▶ 450m² of Ponds (Non-priority Habitat) with Medium Distinctiveness in Good condition = 0.5
- ▶ Quantity of Units Created = 0.41



Habitat Intervention - Grassland

Construction

- ▶ Rotavating
- ▶ Seeding
- ▶ 1 day labour

Maintenance

- ▶ Annual Mowing
- ▶ Removal of weeds where required

Unit Change

- ▶ 1000m² of Modified Grassland with Low Distinctiveness in Poor condition = 0.2
- ▶ 1000m² of Other Neutral Grassland with Medium Distinctiveness in Good condition = 0.92
- ▶ Quantity of Units Created = 0.72



Habitat Intervention - Woodland/Scrub/Hedgerows

Construction

- ▶ Planting
- ▶ Install Stake, Tree Guard & Mulch
- ▶ Labour and materials per tree
- ▶ 300 per day per person

Unit Change

- ▶ 800m² of Modified Grassland with Low Distinctiveness in Poor condition = 0.16
- ▶ 800m² of Other Woodland Mixed with Medium Distinctiveness in Good condition = 0.34
- ▶ Quantity of Units Created = 0.18

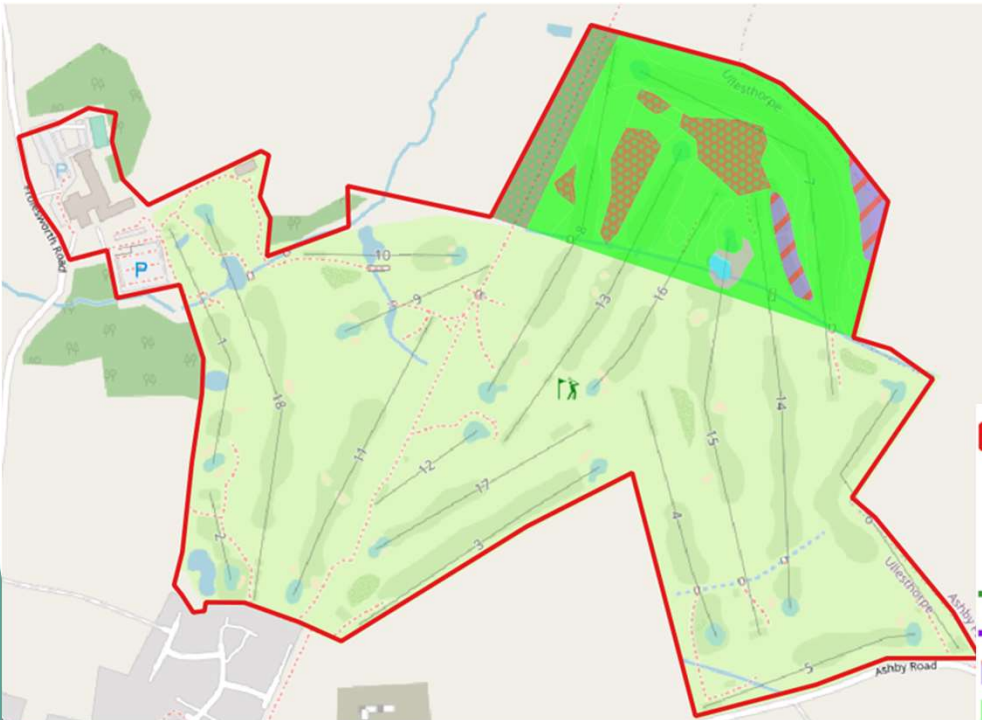
Maintenance

- ▶ Replacement of failed trees one year post planting.
- ▶ Removal of tree guards 3 years post planting



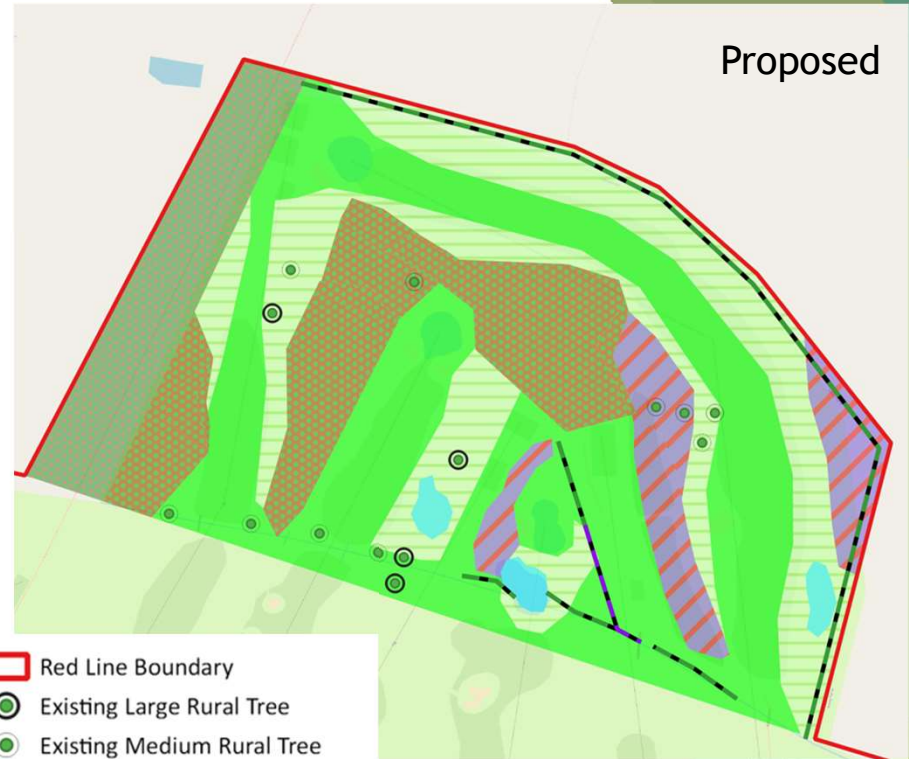
Ullesthorpe - Summary

Baseline

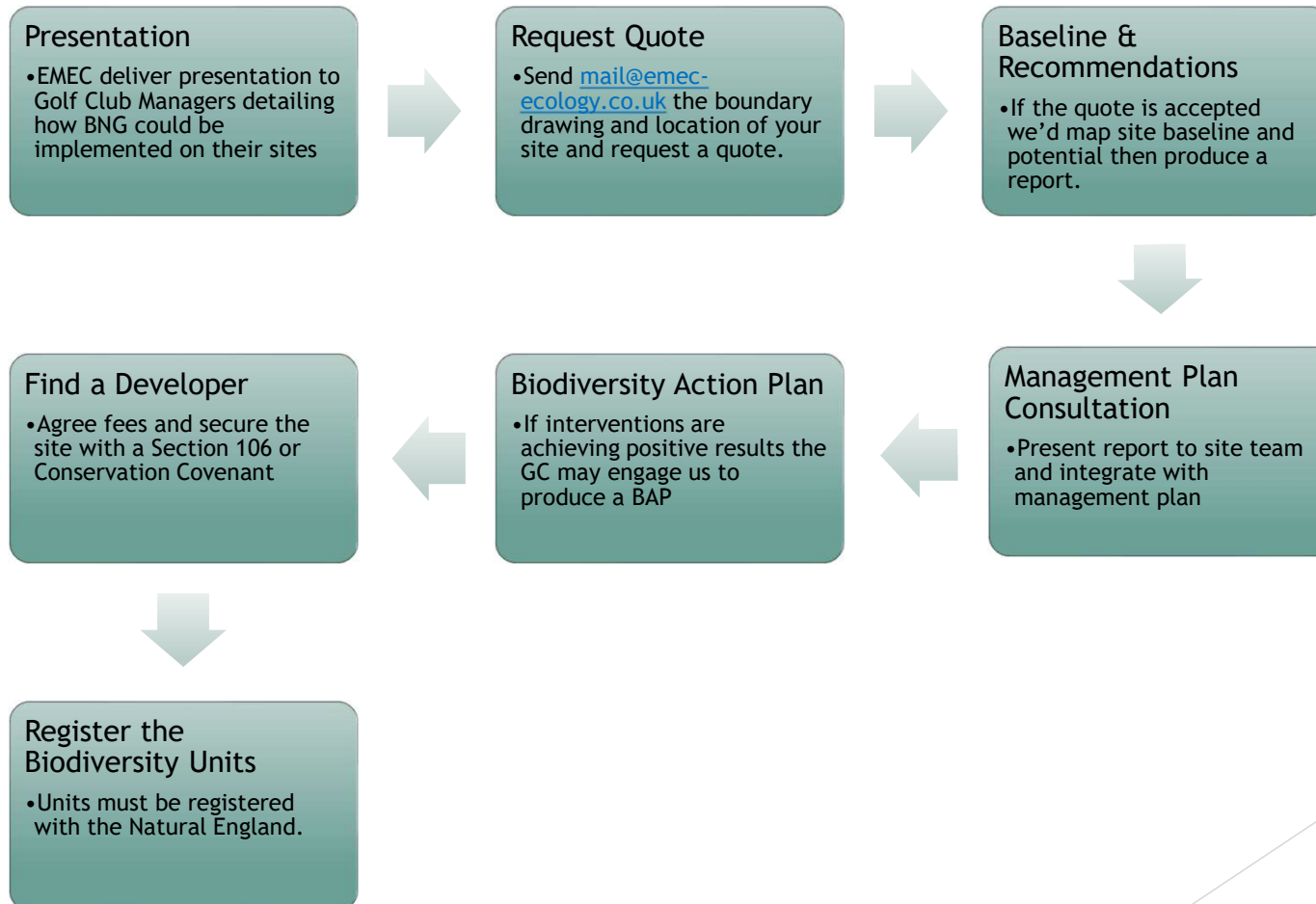


- Red Line Boundary
- Existing Large Rural Tree
- Existing Medium Rural Tree
- Existing Small Rural Tree
- Line of trees
- Species-rich native hedgerow
- Mixed scrub
- Modified grassland
- Other neutral grassland
- Other woodland; broadleaved
- Other woodland; mixed
- Ponds (non-priority habitat)

Proposed



Process



Initial Engagement

- ▶ One day survey by two Ecologists
- ▶ Desk Study
- ▶ Geographic Information System (GIS) mapping of the site
- ▶ DEFRA Metric 4.0 Baseline
- ▶ Report
- ▶ Half day Management Plan Consultation on site

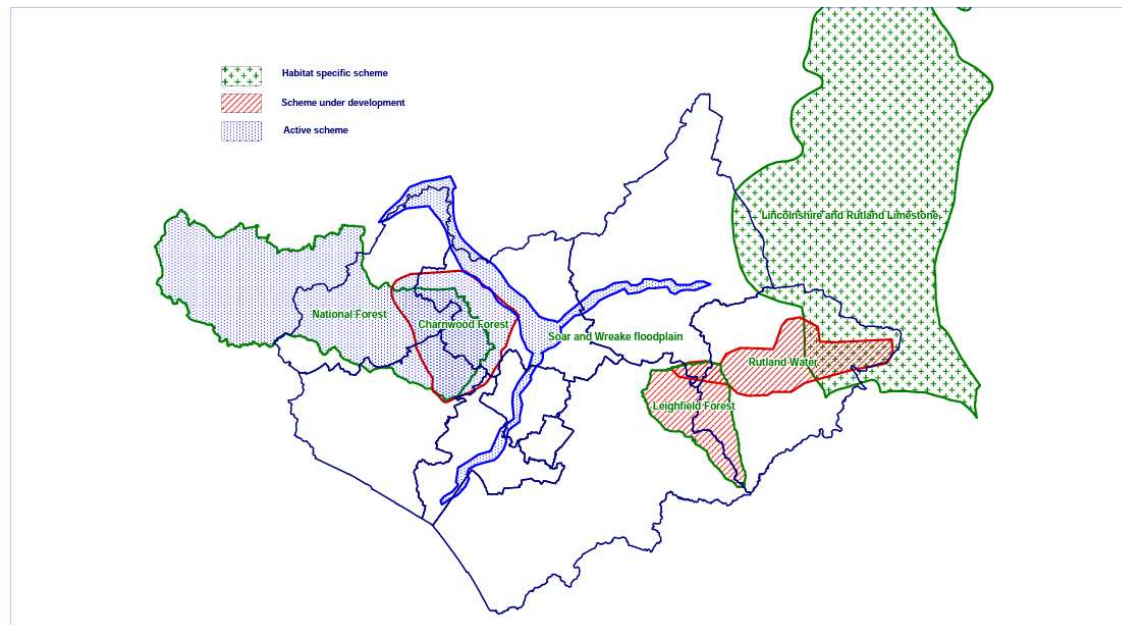
| Code + Description | Description (here the person writing the quote can add a little more detail e.g. type of report etc.) |
|--|---|
| 5 UK Hab Survey | Condition assessment and PEA |
| 50 Travel & Subsistence / Mileage (57p/mile) | As required |
| 9 Desk Study | Local Records Search |
| 9 Desk Study | Review the LRS |
| 36 GIS Mapping | Baseline Map and Potential Map |
| 8 Biodiversity Impact Assessment | Defra Metric Calcs |
| 33 Reporting | Including recommendations |
| 54 Quality Assurance | |
| 47 Ecologist rate (hour) | Visit Site, Brief management team on the report so they can input into their management plan. |
| 50 Travel & Subsistence / Mileage (57p/mile) | As required |



Further Engagement

- ▶ Desk Study
- ▶ Produce a Biodiversity Action Plan (BAP)
- ▶ Liaise with LPA and Developers
- ▶ Broker the creation of a Conservation Covenant or Section 106

Leicester, Leicestershire and Rutland BAP 2016



Sources of information

- ▶ <https://emec-ecology.co.uk/biodiversity-net-gain/>
- ▶ <https://www.legislation.gov.uk/ukpga/2021/30/schedule/14/enacted>
- ▶ <http://publications.naturalengland.org.uk/publication/6049804846366720>
- ▶ <https://cieem.net/resource/biodiversity-net-gain-good-practice-principles-for-development/>
- ▶ <https://www.gov.uk/government/publications/national-planning-policy-framework--2>
- ▶ https://consult.defra.gov.uk/land-use/net-gain/user_uploads/07-2.-calculating-and-collecting-the-tariff.pdf
- ▶ <https://www.gov.uk/guidance/biodiversity-metric-calculate-the-biodiversity-net-gain-of-a-project-or-development>
- ▶ <https://www.lrwt.org.uk/about-us/caring-wild-places/biodiversity-action-plan>
- ▶ <https://thelandtrust.org.uk/suitable-alternative-natural-greenspace-sang-and-biodiversity-net-gain-bng/>

Any
Questions



emec
E C O L O G Y
A R B O R I C U L T U R E
L A N D M A N A G E M E N T